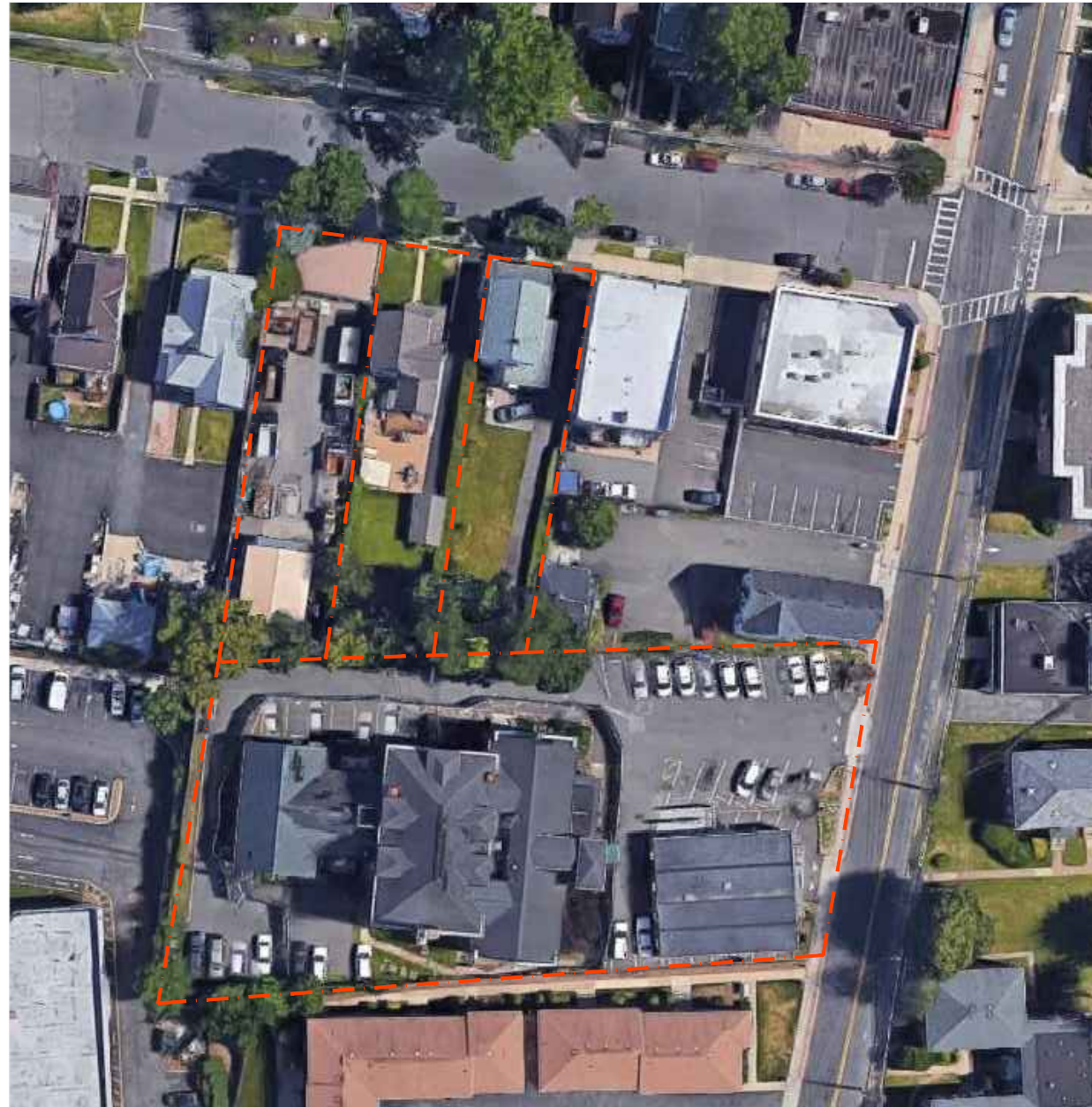


# BOROUGH OF DUMONT POLICE AND MUNICIPAL BUILDING

---

## SCHEMATIC DESIGN



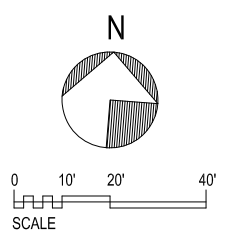


PROPOSED 3 STORY  
POLICE AND  
MUNICIPAL BUILDING

EXIST'G COM.  
TOWER

WEST QUACKENBUSH AVENUE

WASHINGTON AVENUE

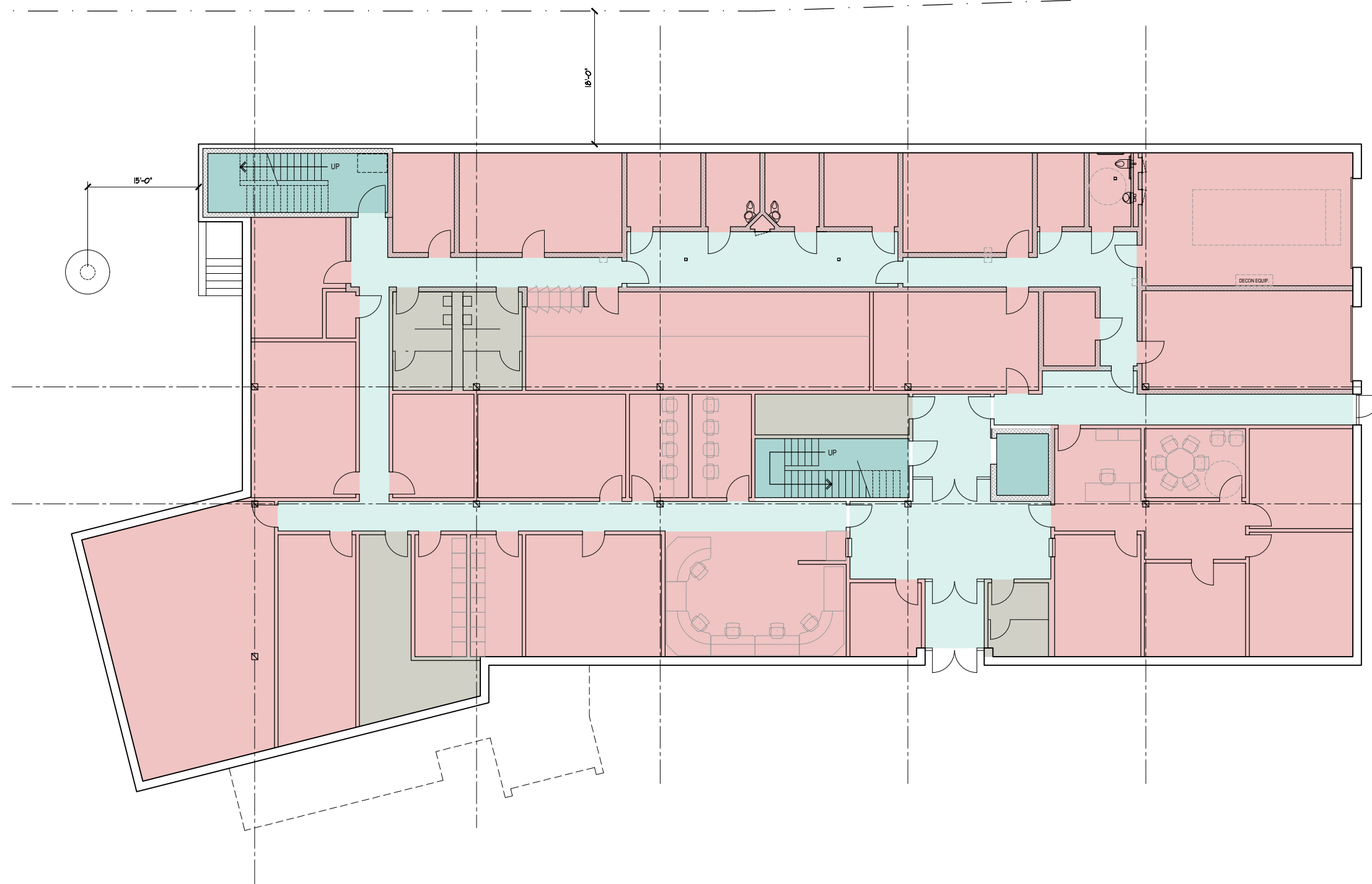


DUMONT MUNICIPAL AND POLICE BUILDING - SITE PLAN

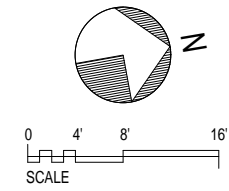
DATE: JUNE 12, 2018



SCALE : 1" = 40' - 0"



- PROGRAM AREAS
- PUBLIC AND CIRCULATION
- VERTICAL CIRCULATION
- UTILITY SPACES



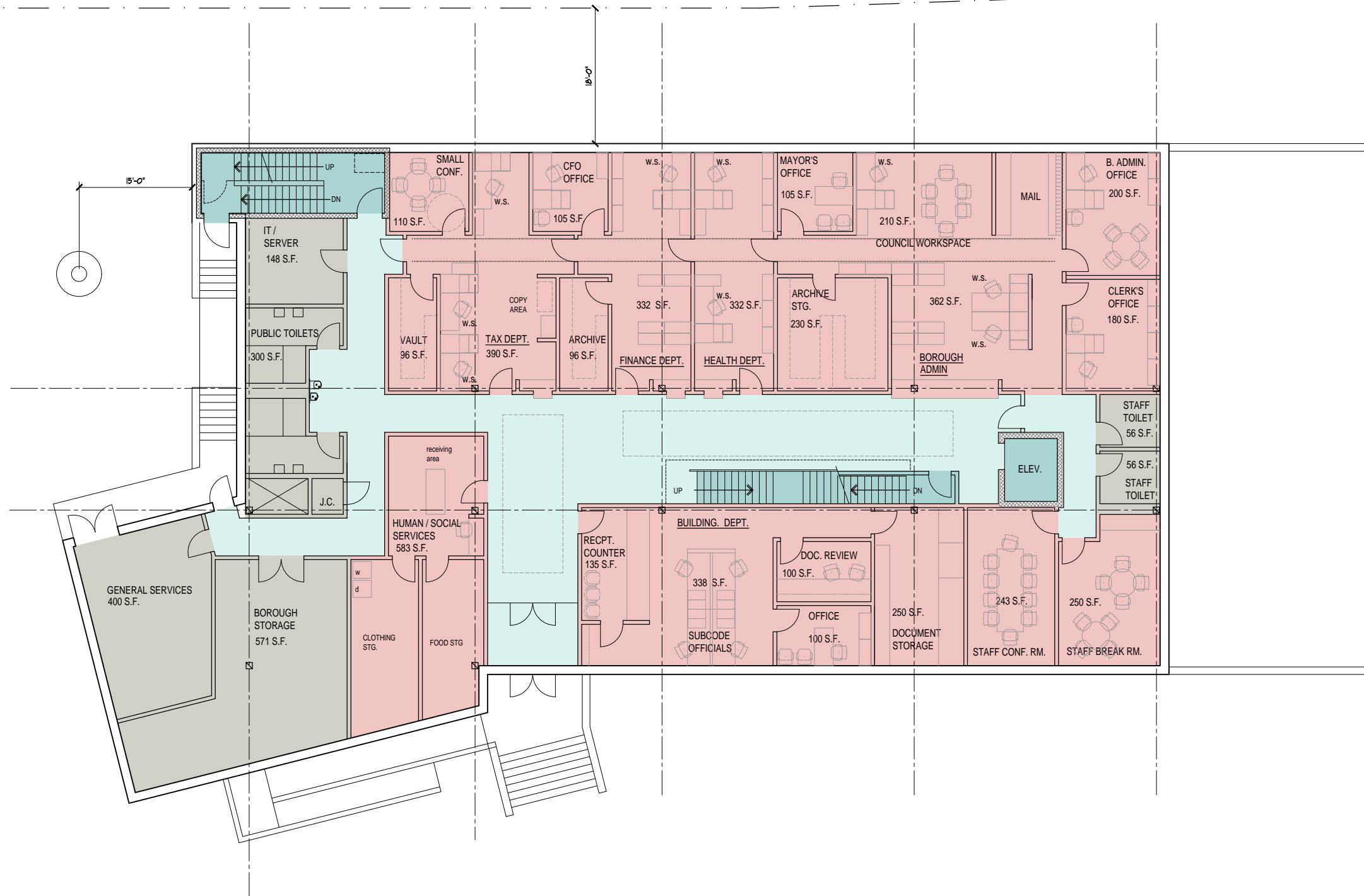
DUMONT MUNICIPAL AND POLICE BUILDING - LOWER LEVEL PLAN - POLICE PROGRAM - 11,735 S.F.

DATE: JUNE 12, 2018

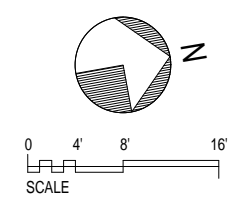


SCALE : 1/16" = 1'-0"





- PROGRAM AREAS
- PUBLIC AND CIRCULATION
- VERTICAL CIRCULATION
- UTILITY SPACES

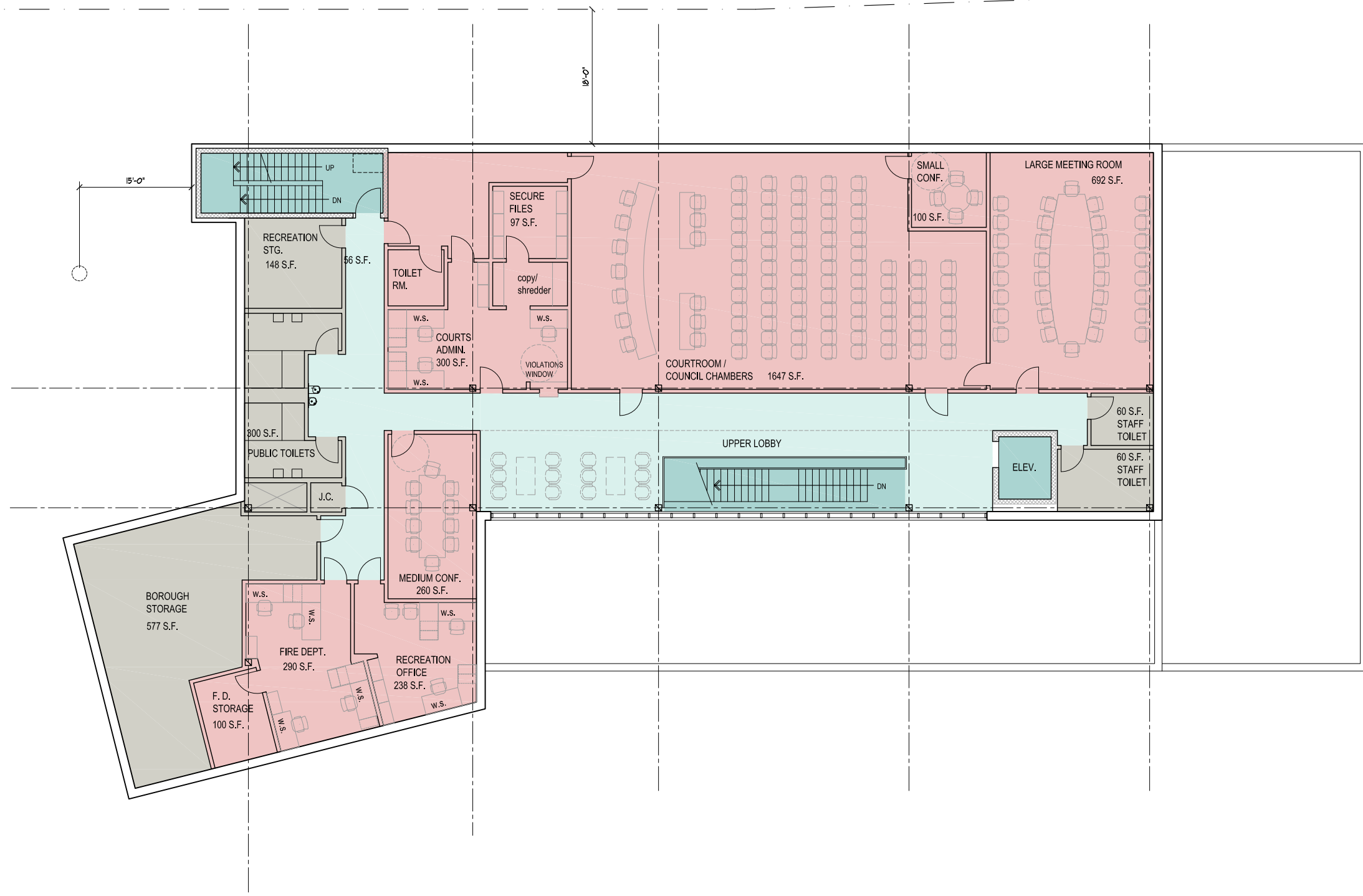


DUMONT MUNICIPAL AND POLICE BUILDING - INTERMEDIATE LEVEL PLAN - MUNICIPAL SERVICES - 9,796 S.F.

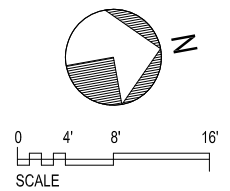
DATE: JUNE 12, 2018



SCALE : 1/16" = 1'-0"



- PROGRAM AREAS
- PUBLIC AND CIRCULATION
- VERTICAL CIRCULATION
- UTILITY SPACES

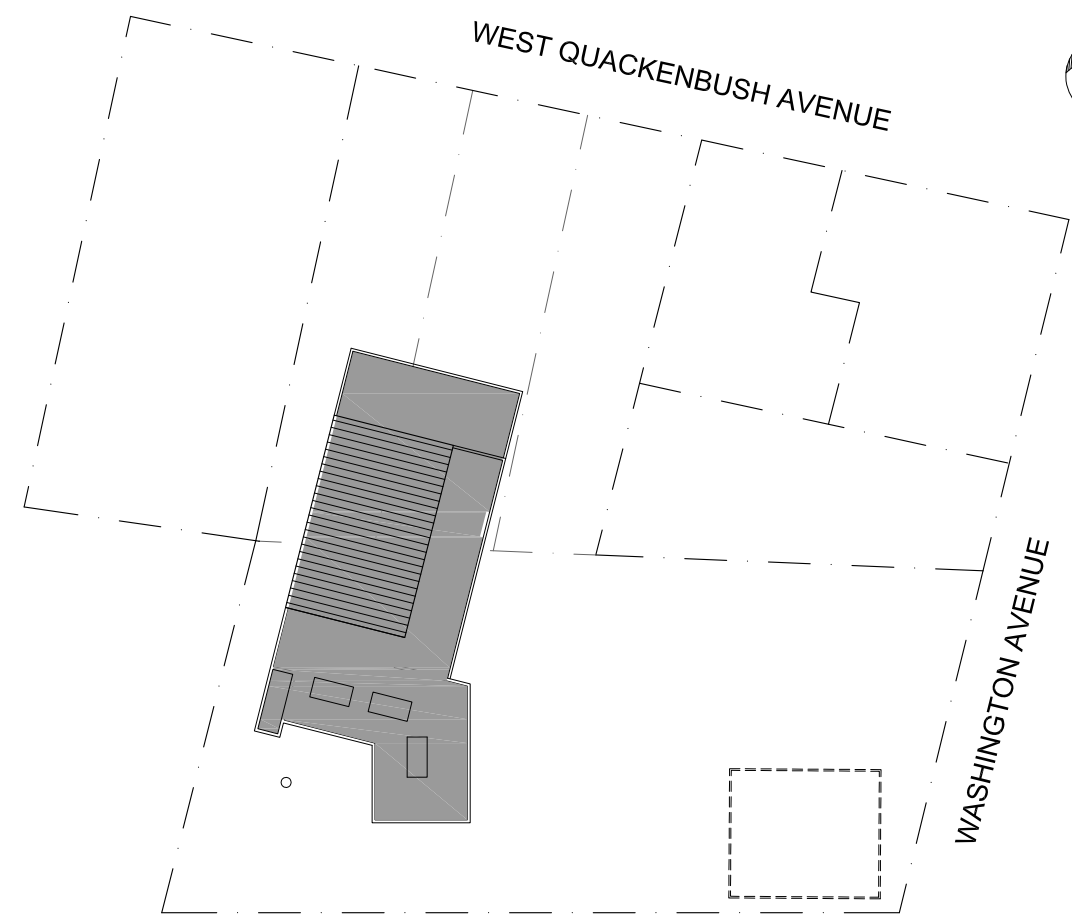
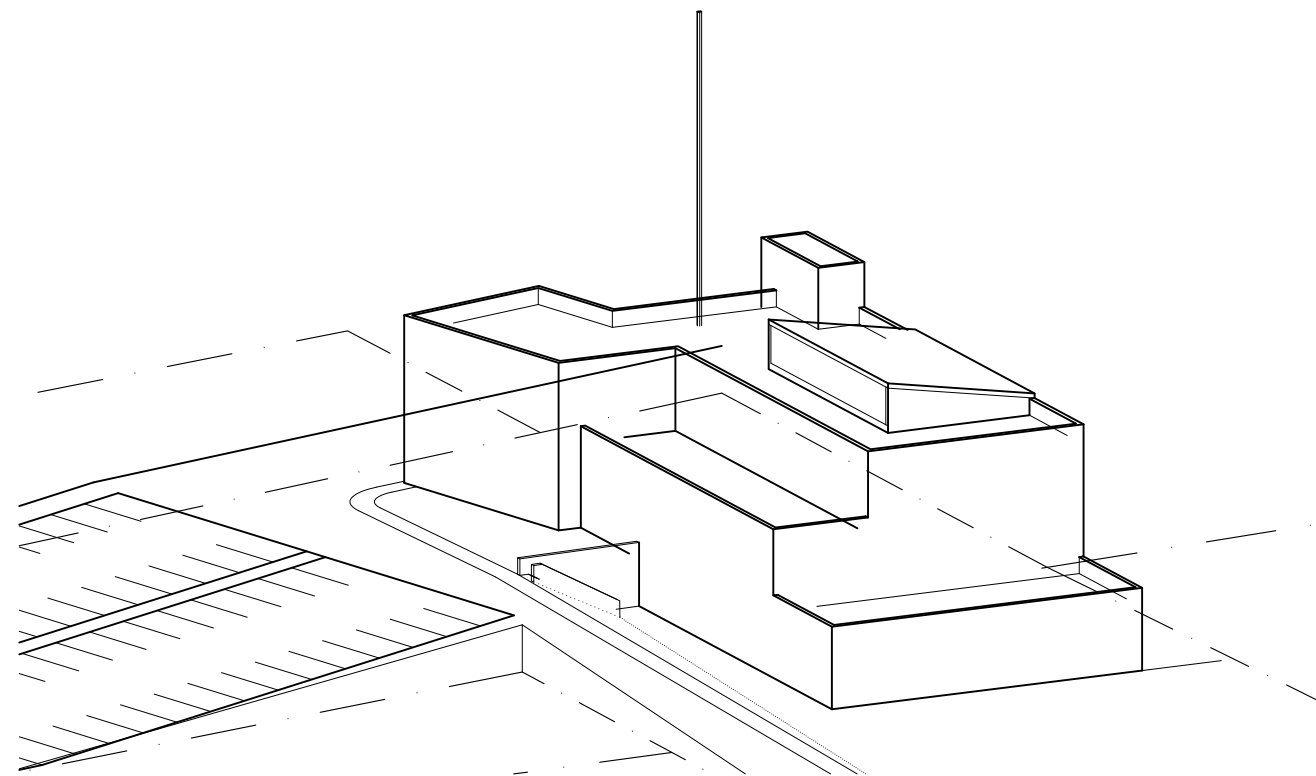
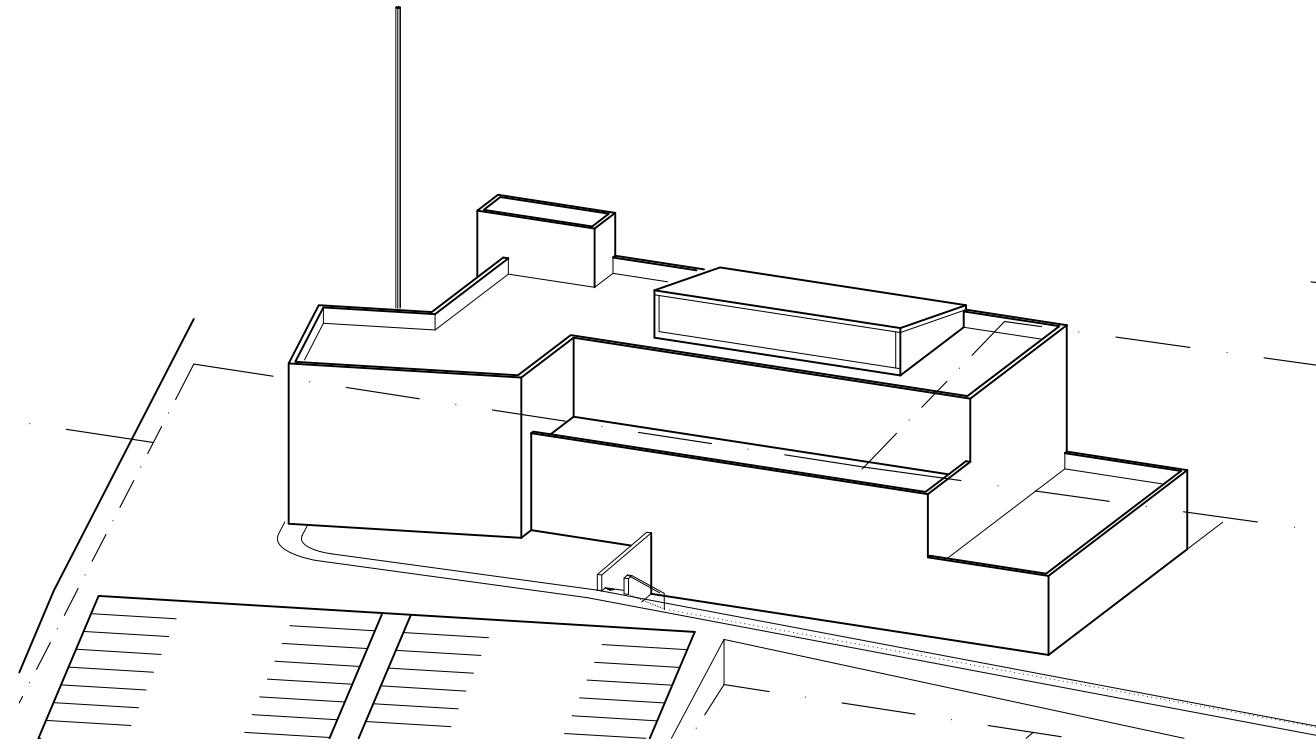


DUMONT MUNICIPAL AND POLICE BUILDING - UPPER LEVEL PLAN - COURTS AND COUNCIL CHAMBER - 7,971 S.F.

DATE: JUNE 12, 2018



SCALE : 1/16" = 1'-0"

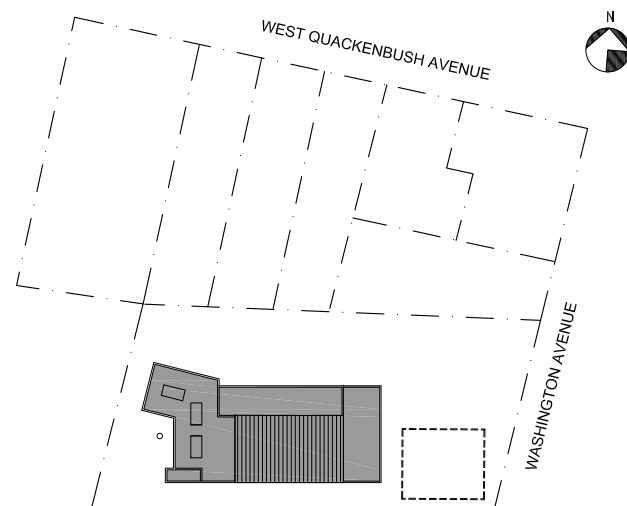


## WASHINGTON AVENUE SITE:

( EXISTING PROPERTY )

### DISADVANTAGES:

- Police Sally Port entry faces Washington Avenue (main public street) - difficult access control.
- Municipal Entry faces Quackenbush Avenue (side street) - Less public presence.
- Insufficient parking.
- Construction access limited.
- Potential conflict between construction operations and Police operations.
- Proximity of excavations for footings near temporary police quarters.

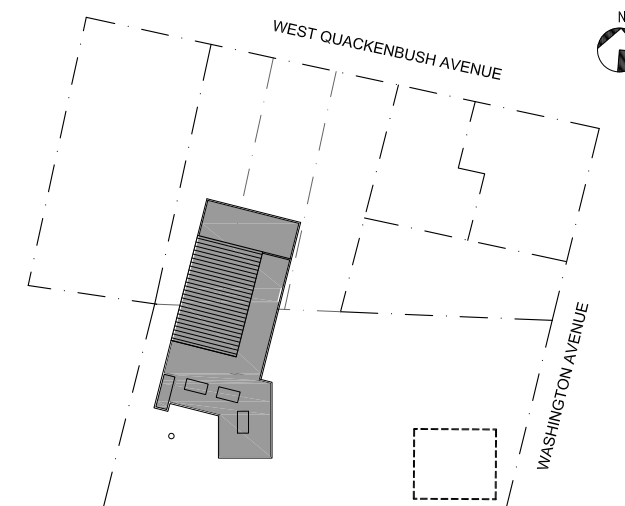


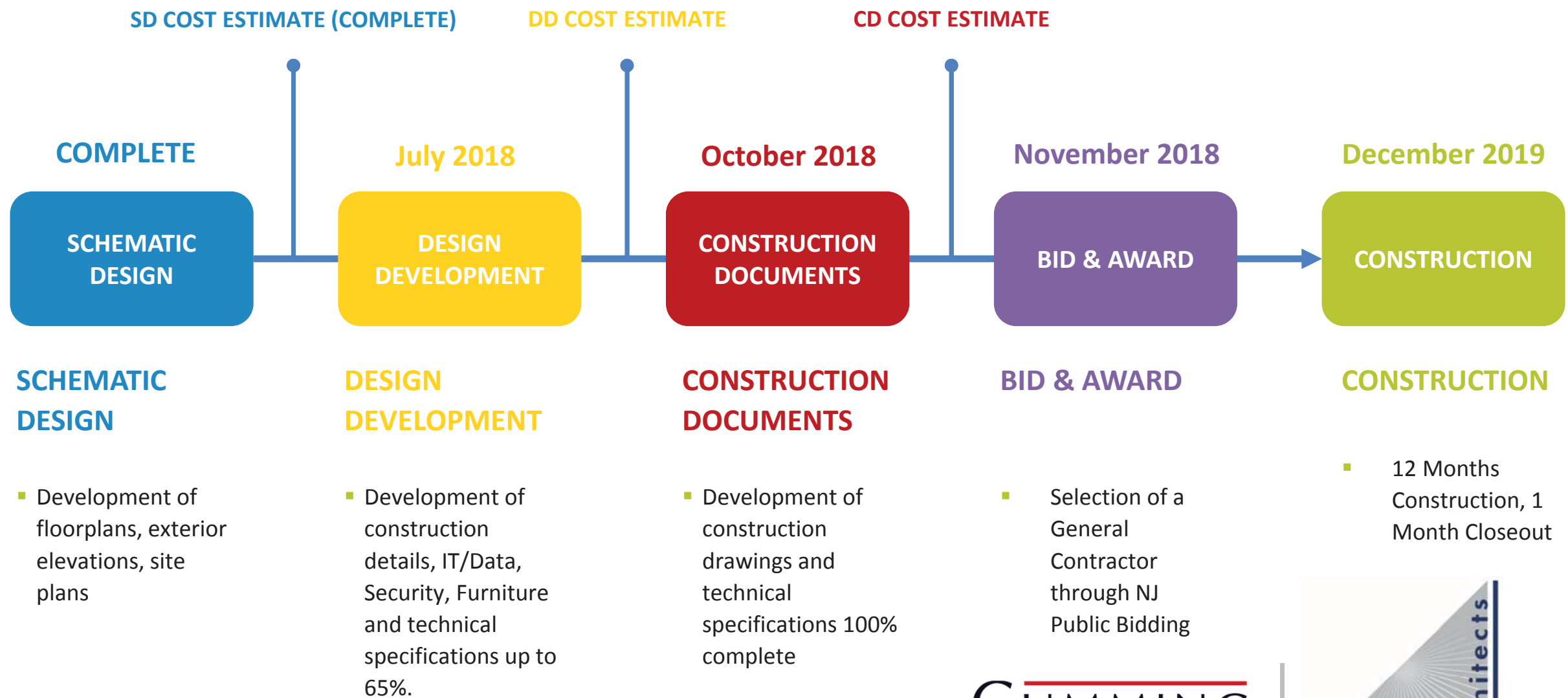
## FINAL DESIGN SITE:

( EXISTING PROPERTY AND LOTS #27, 23, and 19 QUACKENBUSH AVE.)

### ADVANTAGES:

- Police Sally Port entry faces Quackenbush Avenue (side street) - provides better access control.
- Municipal Entry faces Washington Avenue (main public street) - Better public presence.
- More adequate parking.
- Better construction access.
- Better separation between construction operations and Police operations.
- Less concern over disturbing existing occupied structures.



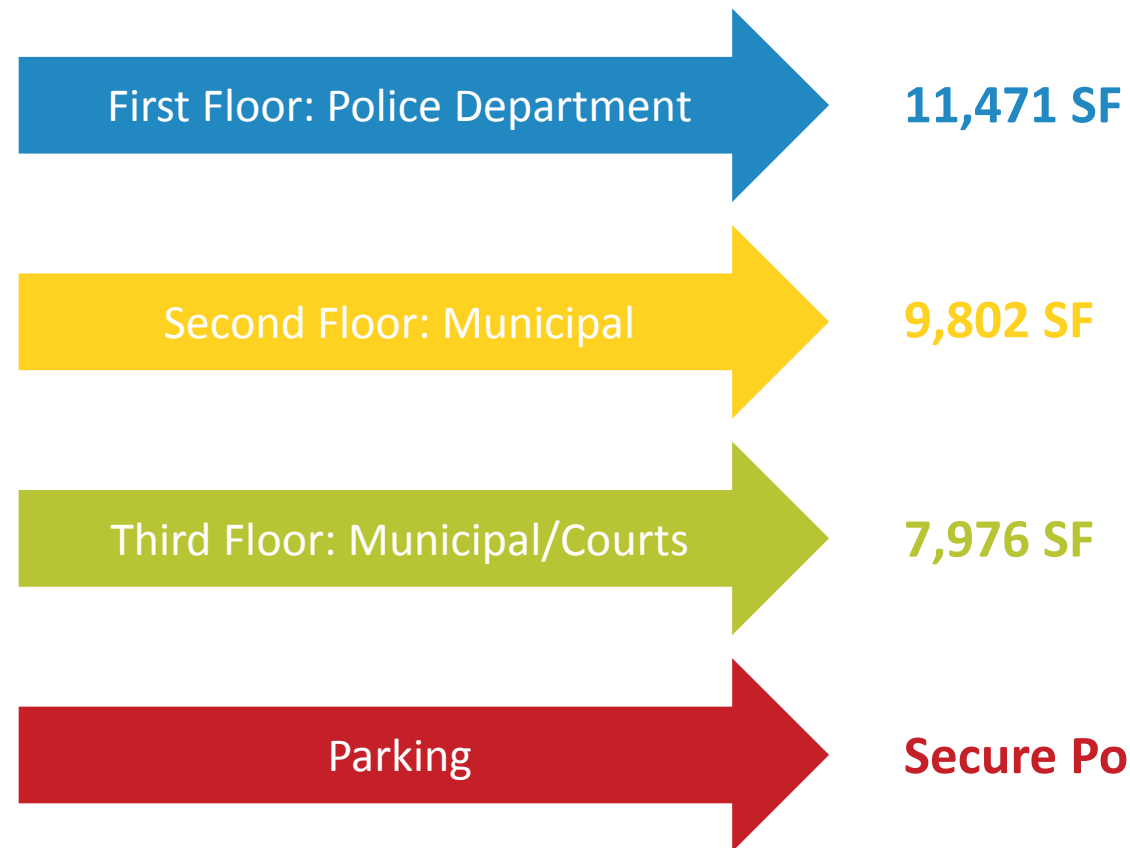


\*Listed dates are completion dates





# NEW DUMONT MUNICIPAL COMPLEX: BY THE NUMBERS



Description	Cost Estimate
Site Construction	\$977,905
Building Construction	\$10,348,520
Construction Contingency (5%)	\$566,321
<b>Total Construction Cost</b>	<b>\$11,892,746</b>

